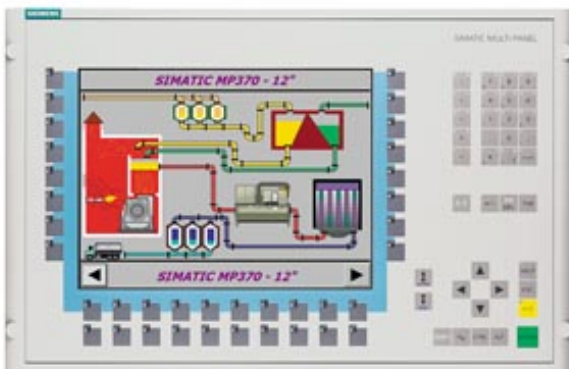


\*\*\*Spare part\*\*\* SIMATIC Multi Panel MP 370 12" color TFT display,  
 Keys Windows CE 3.0 configurable with ProTool From Version  
 V5.2+SP3



General information	
Customer-specific configuration	No
Display	
Design of display	TFT, 256 colors
Screen diagonal	12.1 in
Resolution (pixels)	
• Horizontal image resolution	800 Pixel
• Vertical image resolution	600 Pixel
Backlighting	
• MTBF backlighting (at 25 °C)	50 000 h
Control elements	
Control elements	Membrane keyboard
Keyboard fonts	
• Membrane keyboard	Yes
— user-definable label membrane keys	Yes
• Function keys	
— Number of function keys	36
— Number of function keys with LEDs	36

• System keys	
— Number of system keys	38
• Numeric keyboard	Yes
• alphanumeric keyboard	Yes
• hexadecimal keyboard	Yes
• Multi-key operation	Yes
— Number of multi-key operations	36
<b>Touch operation</b>	
• Design as touch screen	No
<b>Connection type</b>	
• Type of connection for mouse/keyboard/barcode reader	USB / USB / USB
<b>Special operator controls</b>	
• Illuminated pushbutton	Yes
<b>Installation type/mounting</b>	
Mounting position	vertical
maximum permissible angle of inclination without external ventilation	35°
<b>Supply voltage</b>	
Type of supply voltage	DC
UPS connectable (serial)	Yes
<b>Input current</b>	
Current consumption (rated value)	1.15 A
Starting current inrush I <sup>2</sup> t	0.5 A <sup>2</sup> ·s
<b>Power</b>	
Active power input, typ.	28 W
<b>Processor</b>	
Processor type	MIPS
<b>Memory</b>	
Type of memory	Flash / RAM
Memory available for user data	7 168 kbyte
<b>Battery</b>	
Backup battery	
• Backup battery (optional)	Yes; optional 3.6 V
• Backup time, min.	3 y
<b>Type of output</b>	
Info LED	Yes
Power LED	No
Error LED	Yes

Time of day	
Clock	
<ul style="list-style-type: none"> <li>Type</li> <li>retentive</li> <li>synchronizable</li> </ul>	Hardware clock, battery backup, synchronizable Yes; yes, via optional battery Yes
Interfaces	
Interfaces/bus type	1x TTY, 2x RS 232, 1x RS 422, 1x RS 485, 1x Ethernet (RJ45) (max. 12 Mbit/s)
USB port	Yes; 1x USB
PC card slot	1x PC card slot
CF card slot	1x CF card slot
Degree and class of protection	
IP (at the front)	IP65
IP (rear)	IP20
Standards, approvals, certificates	
Certifications	CE, FM Class I Div. 2, cULus, EX Zone 2/22
Ambient conditions	
Ambient temperature during operation	
<ul style="list-style-type: none"> <li>min.</li> <li>max.</li> </ul>	0 °C 50 °C
Ambient temperature during storage/transportation	
<ul style="list-style-type: none"> <li>min.</li> <li>max.</li> </ul>	-20 °C 60 °C
Relative humidity	
<ul style="list-style-type: none"> <li>Operation, max.</li> </ul>	85 %
Operating systems	
pre-installed operating system	Windows CE
Configuration	
Configuration software	
<ul style="list-style-type: none"> <li>Configuration tool</li> </ul>	ProTool Version 5.2 SP 3 or higher, or WinCC flexible Standard Version 2004 or higher (to be ordered separately)
Languages	
Online languages	
<ul style="list-style-type: none"> <li>Number of online/runtime languages</li> </ul>	5
Project languages	
<ul style="list-style-type: none"> <li>Languages per project</li> </ul>	32
Functionality under WinCC (TIA Portal)	
Libraries	Yes
Number of Visual Basic Scripts	

• Debugging in the simulator	No
Task planner	Yes
Help system	Yes
• Number of characters per info text	70
• Number of tooltips	0
<b>Message system</b>	
• Number of alarm classes	32
• Number of messages	4 000
• Bit messages	Yes
— Number of bit messages	4 000
• Analog messages	Yes
— Number of analog messages	4 000
• Telegram message procedure Alarm S	Yes
• System messages HMI	Yes
• System messages PLC	Yes
• System messages, other (SIMATIC S7, Sinumerik, Simotion, etc.)	Yes
• Lines	1
• Number of characters per message	80
• Number of process values per message	8
• Acknowledgment groups	Yes
• Message indicator	Yes
• acoustic feedback	No
• First/last value	Yes
<b>Recipe management</b>	
• Number of recipes	500
• Data records per recipe	1 000
• Entries per data record	1 000
• Recipe memory	128 KB integrated Flash, expandable
<b>Variables</b>	
• Number of variables per device	2 048
• Number of variables per screen	400
• Number of variables	2 000
• Initial values	2 048
• Type Date & Time	2 048
• Limit values	Yes
• Multiplexing	Yes
• Structures	Yes
<b>Images</b>	
• Number of configurable images	500
• Permanent window/default	Yes
• Start screen configurable	Yes

• Image selection by PLC	Yes
• Image number in the PLC	Yes
<b>Image objects</b>	
• Text objects	30000 text elements
• Number of I/O fields per image	400
• Number of date/time fields	400
• Index of screen context	No
• Return	Yes
• Graphics object	Bit maps, icons, vector graphics
— Icons	2 000
— Icon (full screen)	0
<b>Complex image objects</b>	
• Status/control	With SIMATIC S7
• dynamic objects	Diagrams, bar graphs, sliders, analog display, invisible buttons
— Number of objects per project	2 000
— Number of curve diagrams per image	20
• Methods	Trend / profile
• Bar graphs	
— Number of bars per chart	20
• Sliders	
— Number of slides per image	20
• Pointer instruments	
— Number of analog indicators per image	20
• Limit value lines	Yes
• Number of alphanumerical fields	300
— alphanumeric fields per image	400
• Number of numerical fields	2 048
— numerical fields per image	400
• Number of password fields	2 048
• Number of visible switches per project	400
— visible switches per image	400
— hidden switches per image	400
• Number of status switches per project	400
— Number of status switches per image	400
• Number of selector switches per project	400
— Selector switches per image	400
• Number of decade switches per project	400
— Decade switches per image	400
• Number of signal lamps per project	400
— Signal lamps per image	400
<b>Attributes for dynamic objects</b>	

• Color change	Yes
• X/Y movement	Yes
• Hide	Yes
• Angle of rotation	No
<b>Lists</b>	
• Number of text lists per project	500
• Number of text lists per image	400
• Number of entries per text list	256
• Number of graphics lists per project	500
• Number of graphic lists per image	400
• Number of entries per graphics list	256
<b>Archiving</b>	
• Number of archives per device	50
• Number of measuring points per project	50
• Number of entries per archive	50 000
• Message archive	Yes
• Process value archive	Yes
• Archiving methods	Sequential log, circular log, alarm log, process value archive
— Sequential archive	Yes
— Short-term archive	Yes
• Memory location	PC card, CF card, Ethernet
— PC card	Yes
— CF card	Yes
— USB memory	No
— Ethernet	Yes
• Data storage format	CSV file, readable, e.g. with MS Excel, MS Access
— CSV	Yes
— TXT	No
• external evaluation	Readable, e.g. with MS Excel, MS Access, etc.
• Size of archive	depending on free memory on ext. card/stick or on free hard disk space via network drive
• Online evaluation	via trends
— using trend curves	Yes
<b>Filters</b>	
• cyclic	Yes
• Tolerance	Yes
• Change	Yes
<b>Security</b>	
• Number of user groups	50
• Number of user rights	32
• Password export/import	Yes
<b>Data carrier support</b>	

• PC card	Yes
• CF card	Yes
• Diskette drive	No
• Hard disk	No
• CD-ROM	No
<b>Logging through printer</b>	
• Recording/Printing	Alarms, report (shift report), color print, hardcopy
<b>Transfer (upload/download)</b>	
• Transfer of configuration	MPI/PROFIBUS DP, serial, USB, Ethernet, by means of external storage medium, automatic transfer recognition
<b>Process coupling</b>	
• Connection to controller	S5, S7-200, S7- 300/400, TI 505, Win AC, PC (TCP/IP), SINUMERIK, SIMOTION, Allen Bradley (DF1), Allen Bradley (DF485), Mitsubishi (FX), Telemecanique (ADJUST), OMRON (LINK/Multilink), Modicon (Modbus), for further non-Siemens drivers, see section on "System interfaces"
• S7-200	Yes
— PPI (point-to-point)	Yes
— PPI network	Yes
— MPI	Yes
— PROFIBUS DP	Yes
• S7-300/400	Yes
— MPI	Yes
— PROFIBUS DP	Yes
— PROFINET	Yes
• S5	Yes
— serial	Yes
— PROFIBUS DP	Yes
• TI 505	Yes
• Allen Bradley (DF1)	Yes
• Allen Bradley (DF485)	Yes
• Mitsubishi (FX)	Yes
• Mitsubishi (MP4)	Yes
• Telemecanique (ADJUST)	Yes
• Telemecanique (Uni-Telway)	Yes
• OMRON (LINK/Multilink)	Yes
• Modicon (Modbus)	Yes
• GE-Fanuc (SNP)	Yes
<b>Functions</b>	
• Key repeat	Yes
• TAB sequence	Yes
• Calculating functions	Yes

• Animate	Yes
• Menu tree editor	No
• Unit switchover	No
<b>Service tools/configuration aids</b>	
• Clean screen	No
• Touch calibration	No
• Backup/Restore manually	Yes
• Simulation	Yes
• Device switchover	Yes
• Delta transfer	Yes
• Monitoring function for battery and memory	Yes
• Trace (operation archive)	No
<b>Expandability/openness</b>	
• Open Platform Program	Yes
<b>Peripherals/Options</b>	
Peripherals	Printer, barcode reader
• SIMATIC HMI MM memory card: Multi Media Card	No
• SIMATIC HMI SD memory card: Secure Digital memory card	No
• USB memory	No
<b>Dimensions</b>	
Width of the housing front	483 mm
Height of housing front	310 mm
Overall depth	59 mm
<b>Weights</b>	
Weight (without packaging)	5.1 kg
<b>Other</b>	
free hotline	Yes
<b>last modified:</b>	08/30/2019